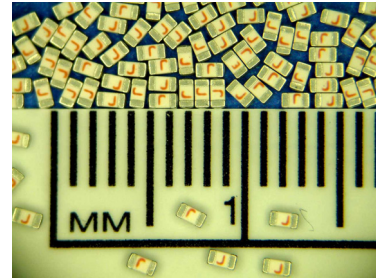


SolidMatrix® 0603 Slow Blow Surface Mount Fuses (Sn/Pb Terminations)



Features:

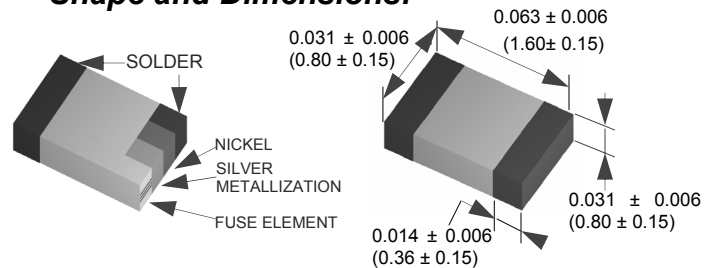
- High inrush current withstanding capability
- Ceramic Monolithic structure
- Silver fusing element and silver termination with nickel and Sn/Pb plating
- Standard EIA0603 / EIAJ1608 size
- Symmetrical design with marking on both sides (optional)
- Operating temperature: -55°C to +125°C (with de-rating)



Clear-Time Characteristics:

% of Current Rating	Clear-time at 25°C	
100%	4 hours min.	
200%	1 second min.	120 seconds max.
300%	0.1 seconds min.	3 seconds max.
800% (1-1.5A)	0.0005 seconds min.	0.05 seconds max.
800% (2-5A)	0.001 seconds min.	0.05 seconds max.

Shape and Dimensions:



Agency Approval: Recognized Under the Components Program of Underwriters Laboratories. File Number: E232989

Patents: U.S. Patent numbers 6,034,589; 6,228,230; 6,602,766; 7,268,661 B2; and other pending patents.

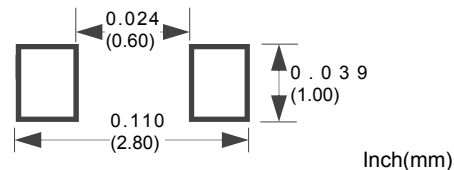
Interrupting Ratings:

50A at rated voltage

Marking(Optional):

Red Marking Character Codes
 1A:E, 1.5A:G, 2A:I, 2.5A:J, 3A:K, 3.5A:L, 4A:M,
 4.5A:T, 5A:N

Recommended Land Pattern:

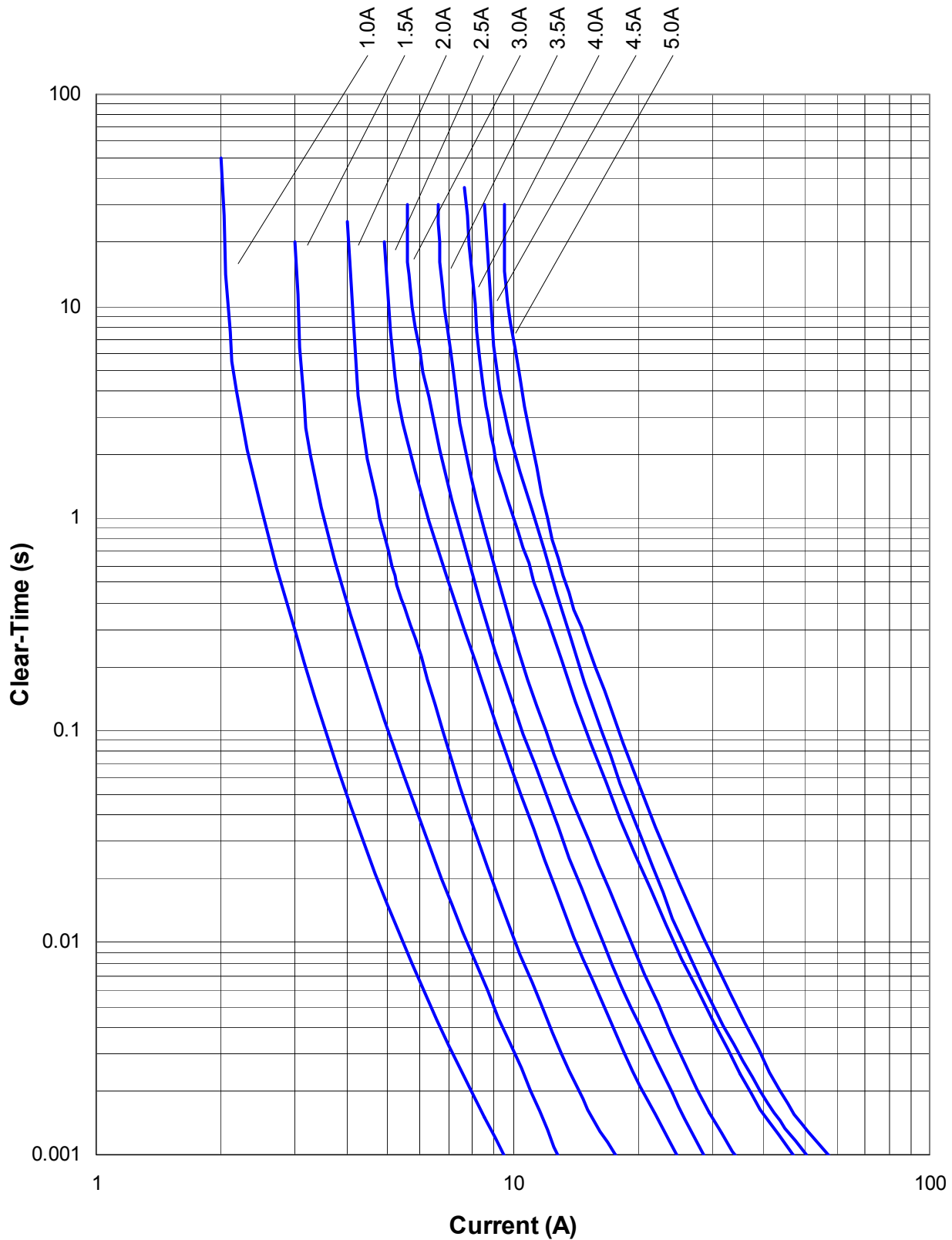


Ordering Information:

Part Number	Current Rating (A)	Voltage Rating (VDC)	Nominal Cold DCR (Ω) ¹	Nominal I^2t (A^2s) ²
F0603SB1000V032T-PB	1.0	32	0.200	0.093
F0603SB1500V032T-PB	1.5	32	0.100	0.18
F0603SB2000V032T-PB	2.0	32	0.052	0.32
F0603SB2500V032T-PB	2.5	32	0.041	0.63
F0603SB3000V032T-PB	3.0	32	0.031	0.87
F0603SB3500V032T-PB	3.5	32	0.021	1.20
F0603SB4000V032T-PB	4.0	32	0.017	2.30
F0603SB4500V032T-PB	4.5	32	0.015	2.70
F0603SB5000V032T-PB	5.0	32	0.013	3.20

1. Measured at $\leq 10\%$ of rated current and 25°C ambient

2. Melting I^2t at 0.001 sec clear-time

SolidMatrix[®] 0603 Slow Blow Surface Mount Fuses (Sn/Pb Terminations)**Average Clear-Time Curves**

Average I^2t vs. t Curves